

UiT

**NORGES
ARKTISKE
UNIVERSITET**

Singel krone påtannimplantat, kasuseksempler

***Asbjørn Jokstad
UiT Norges arktiske universitet
asbjorn.jokstad@uit.no***



Behandlingsmål



*Tannlegen tilbyr
kanskje::*



Ets-bro

Enkeltanns-implantat



*Konvensjonell
bro*



....glansbilder?

Resultatet

komplett system for
tisk tannbehandling

teknikk
sterende maleteknikk
patentert fullkeramisk skjell
styrken med 2 til 3 ganger
genkontrast
samt mot antagonistene
kompatibilit

ro estetikk
niale optiske egenskaper
lin transillians

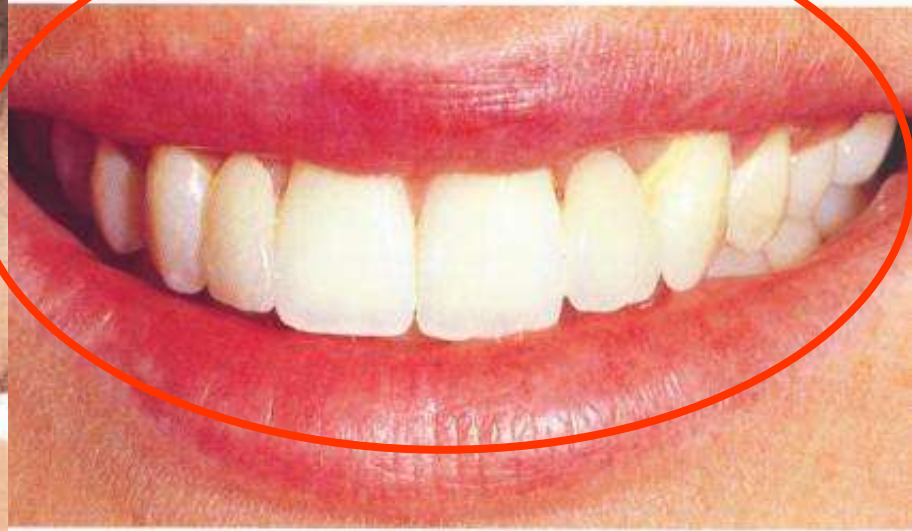
ASTRA TEC

erations restoration of your most challeng-
ing indication for implant treatment.
Unchallenged tissue response in combination
with the flexibility in surgical techniques and
prosthetic options makes the Astra Tech
(Denta) Implant a reliable option for implant

atures are now being launched. Together with
the recently launched Preparable Abutment
system, these components give clinicians and
technicians a wide range of products with
which to handle each individual situation ▲



IPS Empress 2 fronttannsbros



RESULTAT

DPNOVA



by an implantable
Loading Protocol

CASE REPORT
One Stage Procedure

CLINICAL DATA
Scientific update on
Future 50

CASE REPORT
Soft Tissue Sculpturing

CALENDAR OF EVENTS

ASTRA
ASTRA TECH



17-årig pojke som fått en Rochette-
bro som ersättning för 21. (sid 6).
Förlust orsakad av trauma.



..og med hensyn til implantat-krone



Perfekt resultat ?

*Opak krone
pga feil akse?*



Eksponert fikstur?

Gingiva-retraksjon ?

Nekrose nabotann?

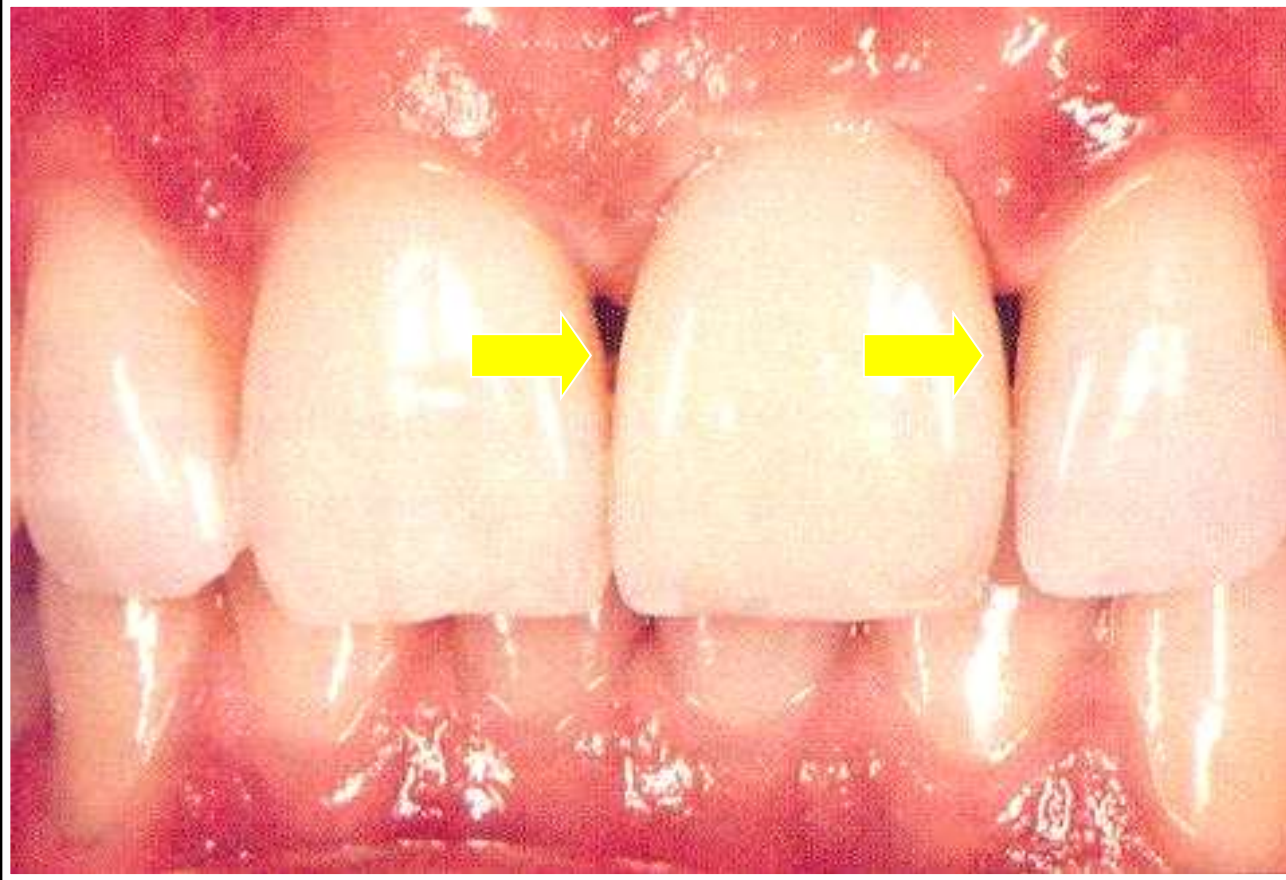


...og det bør vel velges et implantat "av god kvalitet"

Kompromiss mht estetikkk



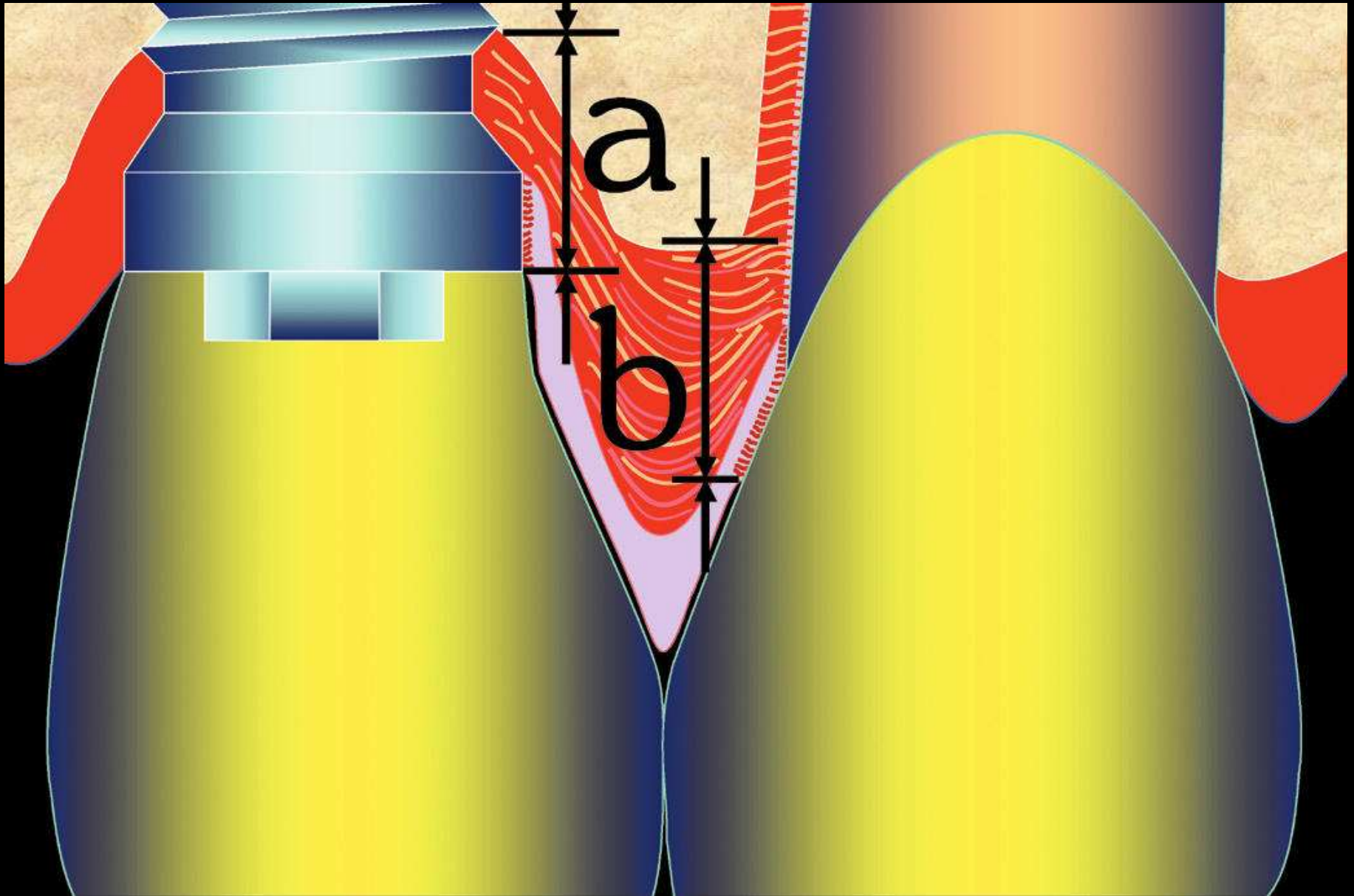
Problem kan oppstå

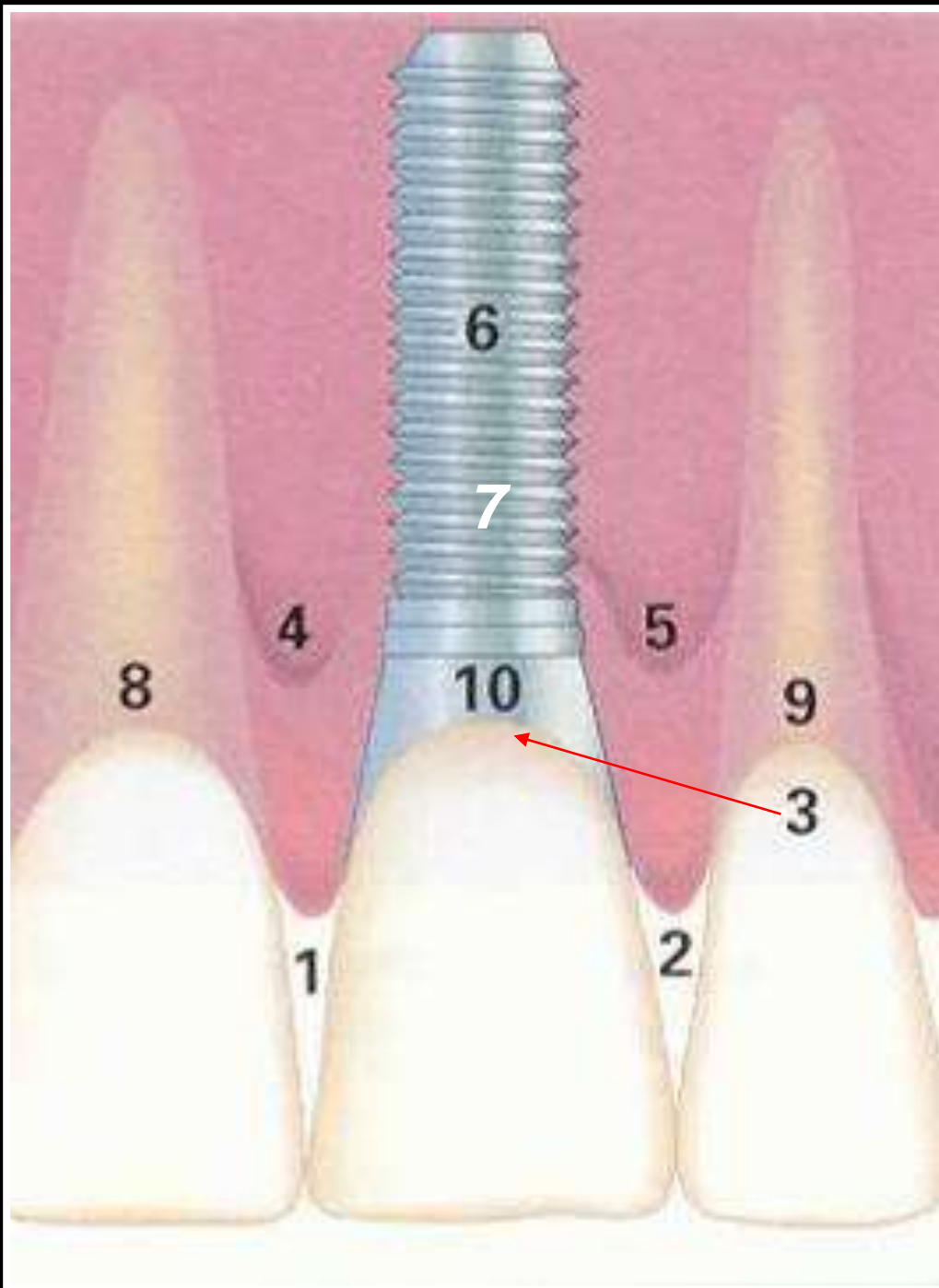


“Jemt Papilla index”



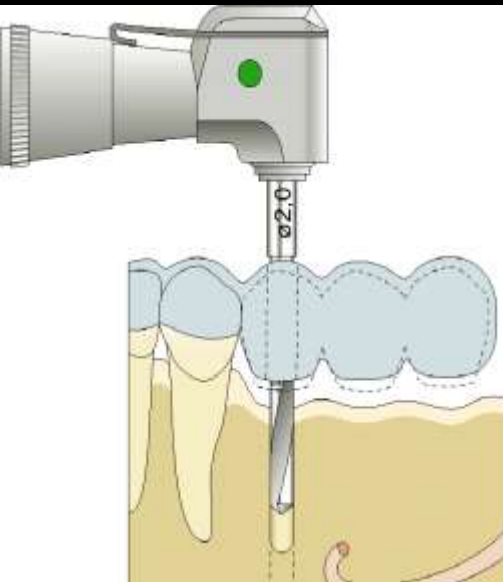
Tarnow et al. 2003 «biologisk bredde» på imp & tann

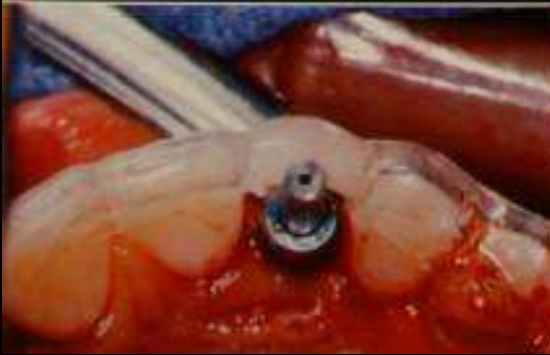


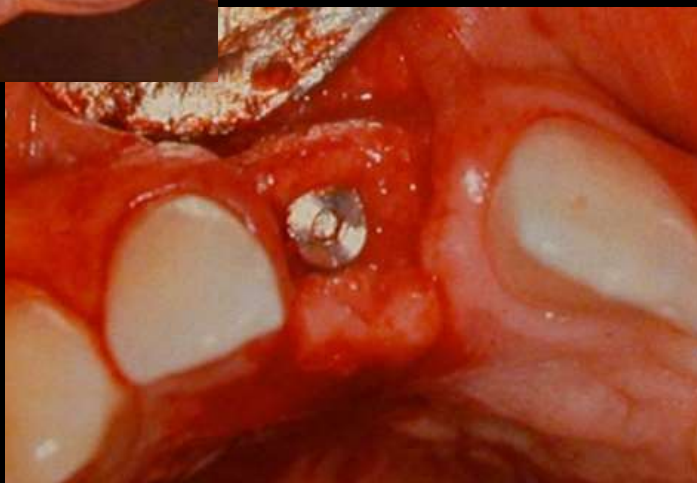
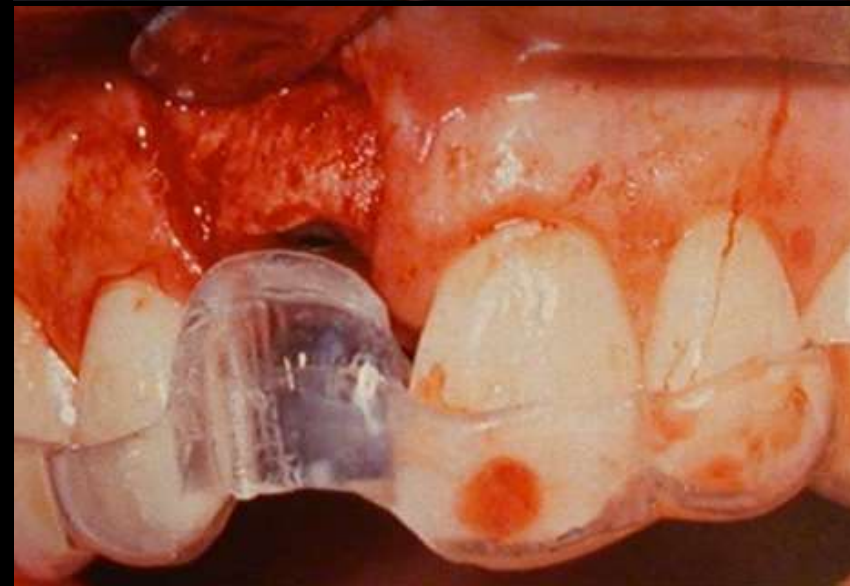
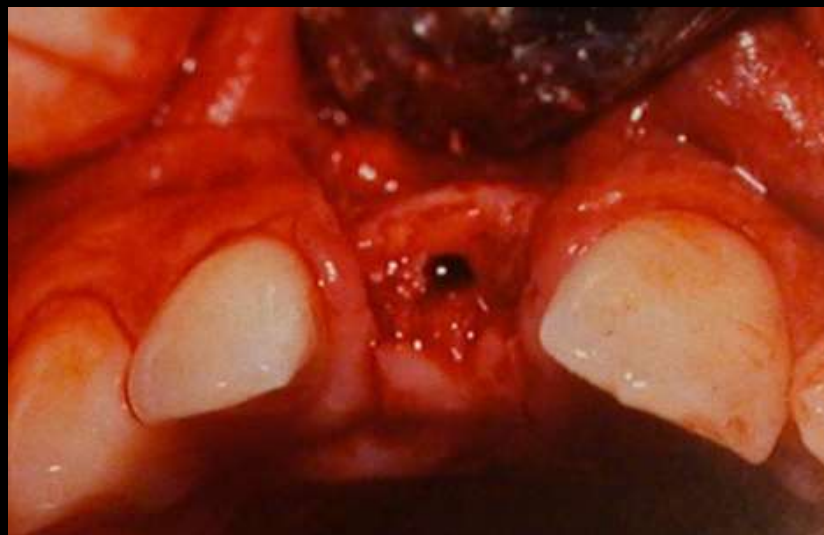
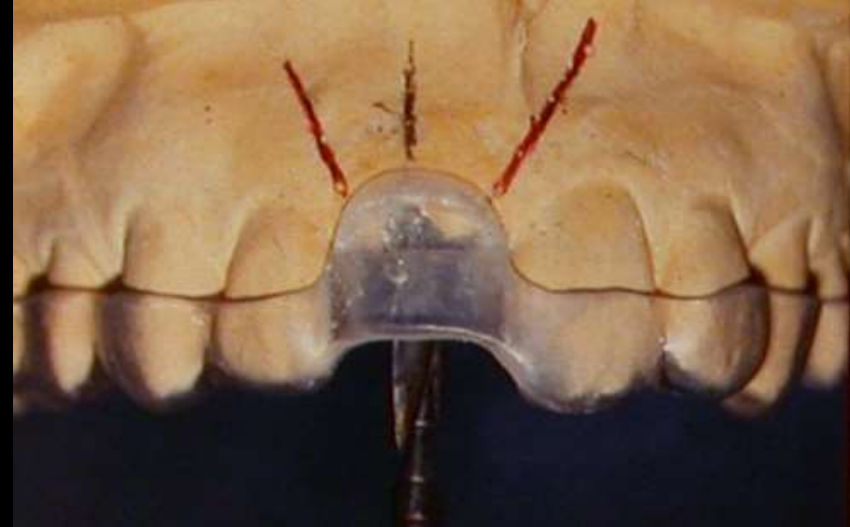


- 1) *Mesial papilla*
- 2) *Distal papilla*
- 3) *Marginal gingiva*
- 4) *Mesial intercrestal bein*
- 5) *Distal intercrestal bein*
- 6) *Implantat integrasjon*
- 7) *Presis implantat posisjon*
- 8) *Nabo marginal gingiva*
- 9) *Nabo marginal gingiva*
- 10) *Emergence profil vinkel*

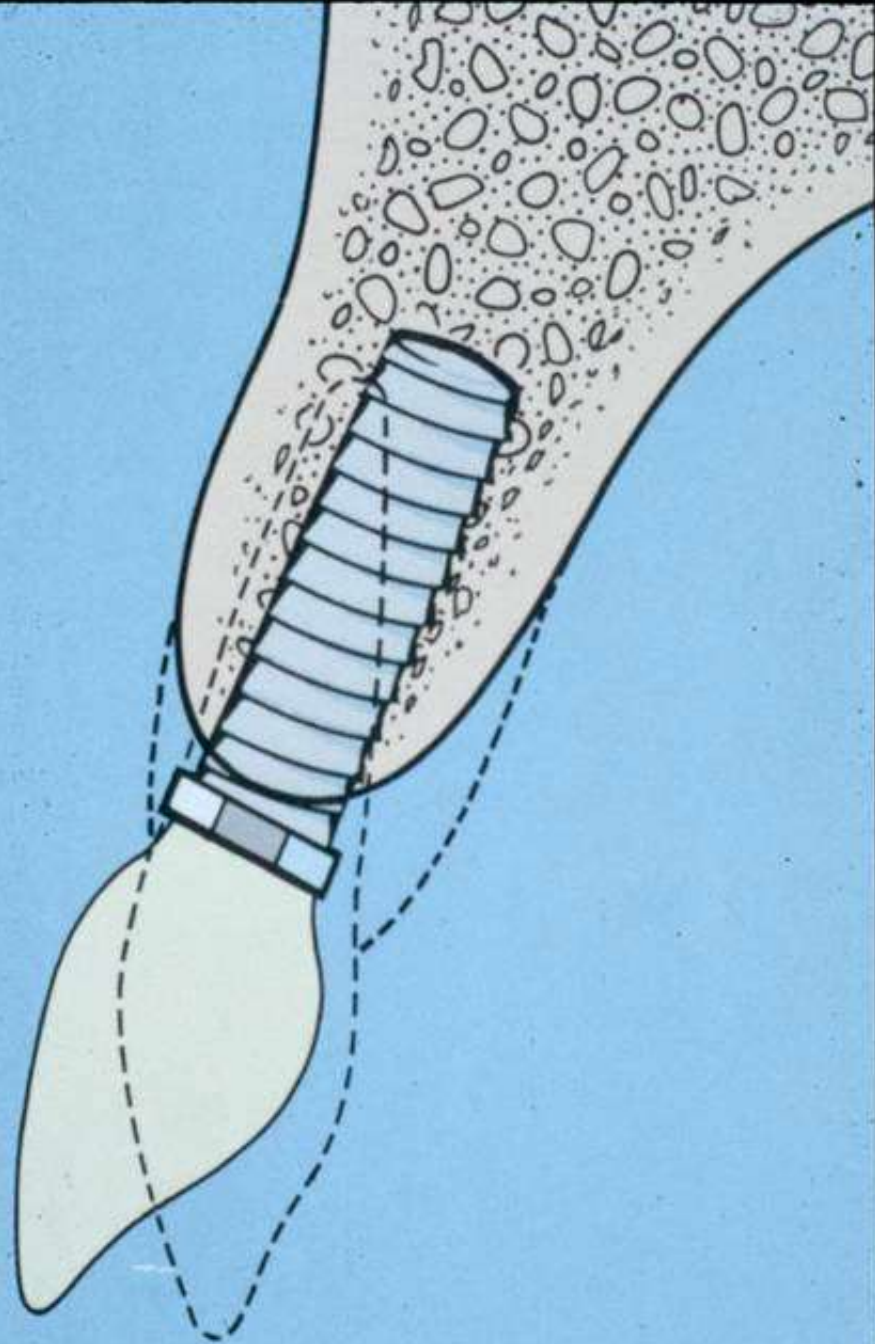
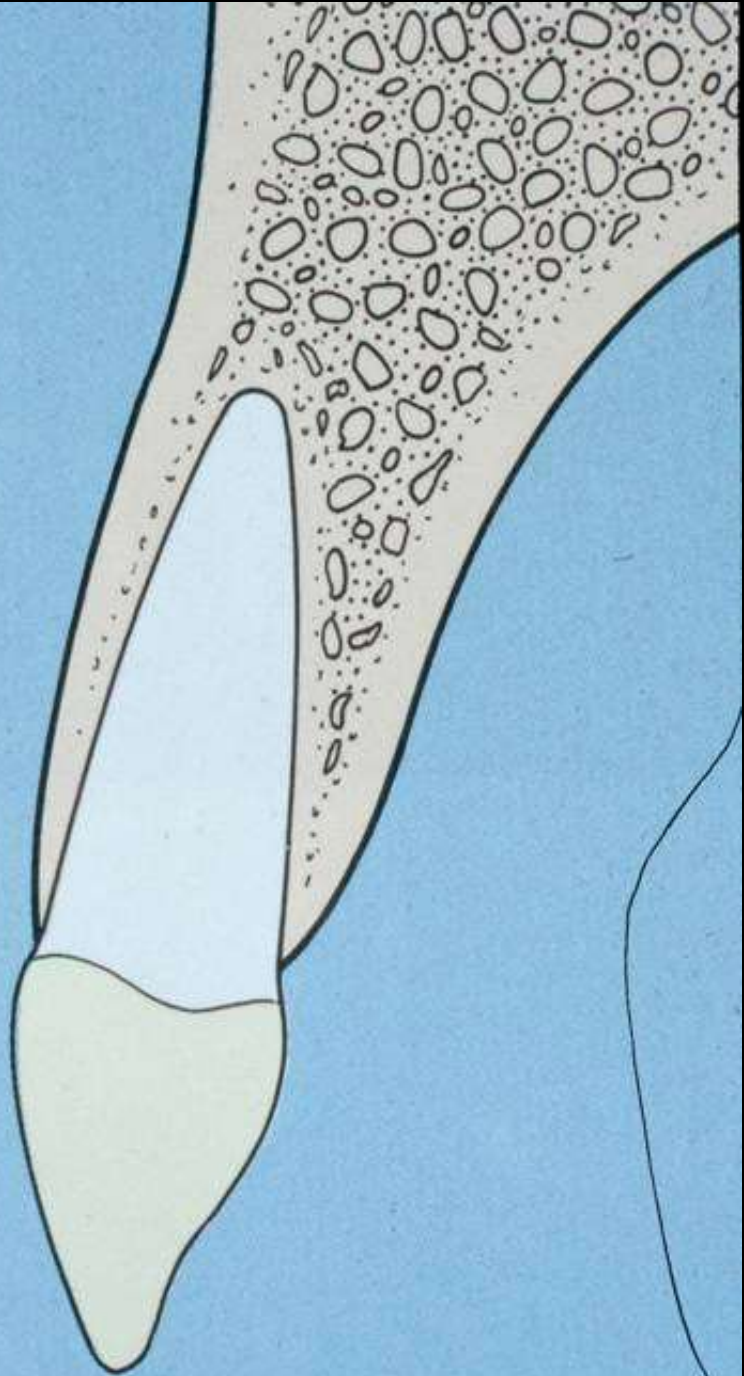
KIRURGISK GUIDE (Surgical Stent)

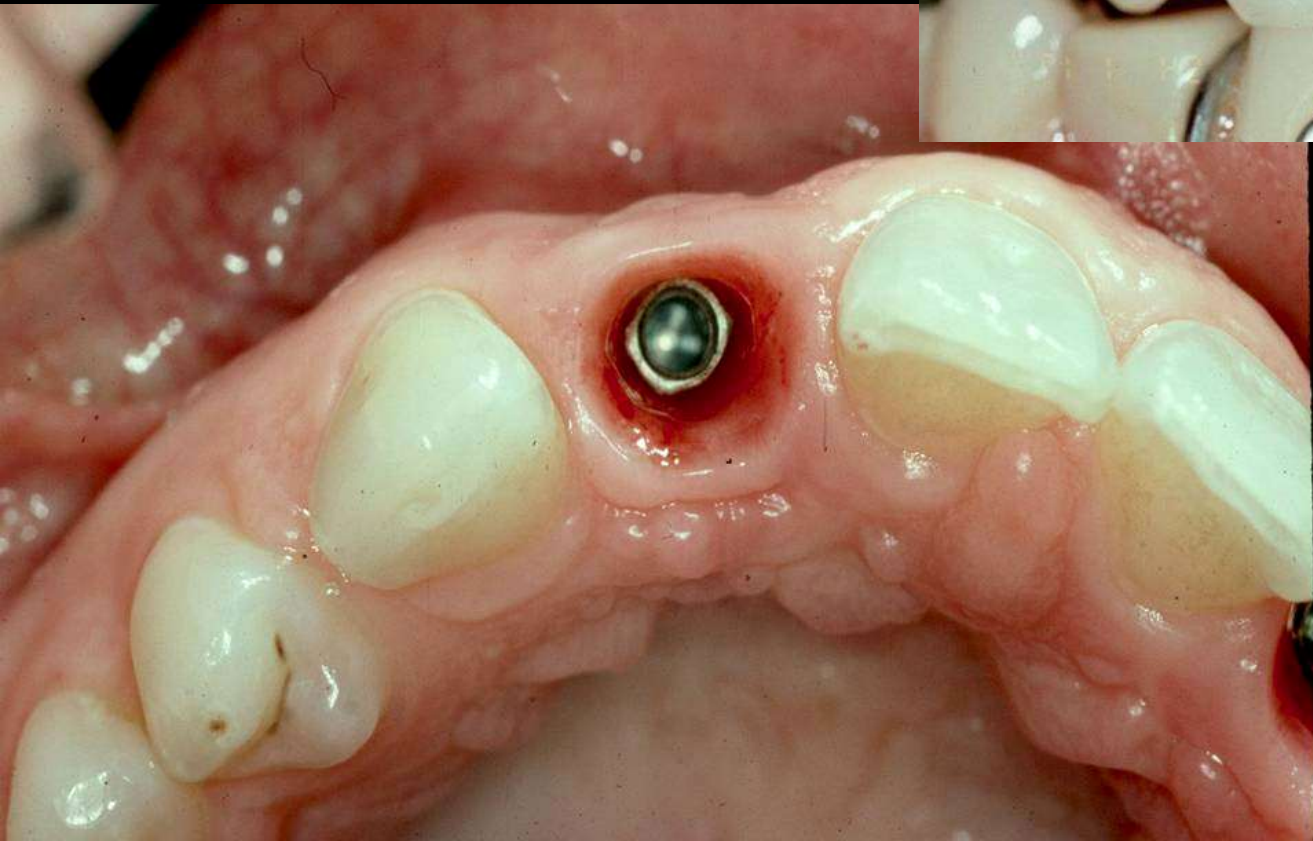
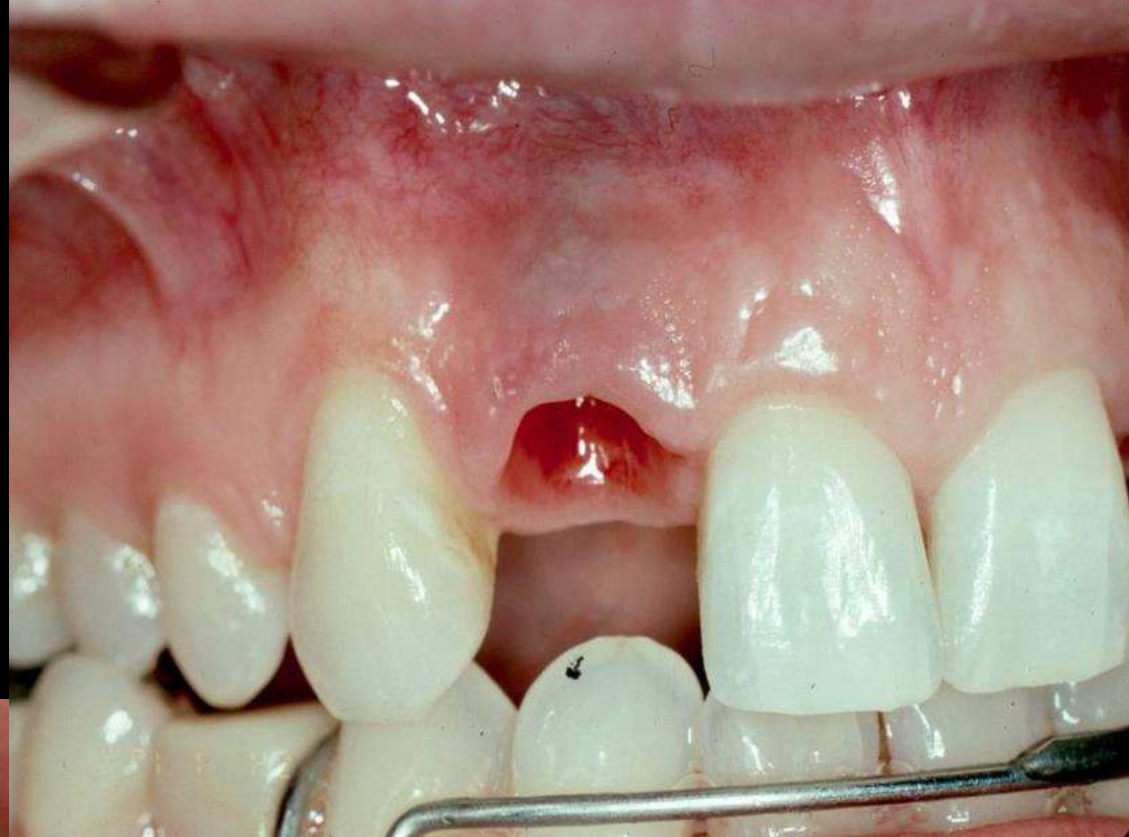


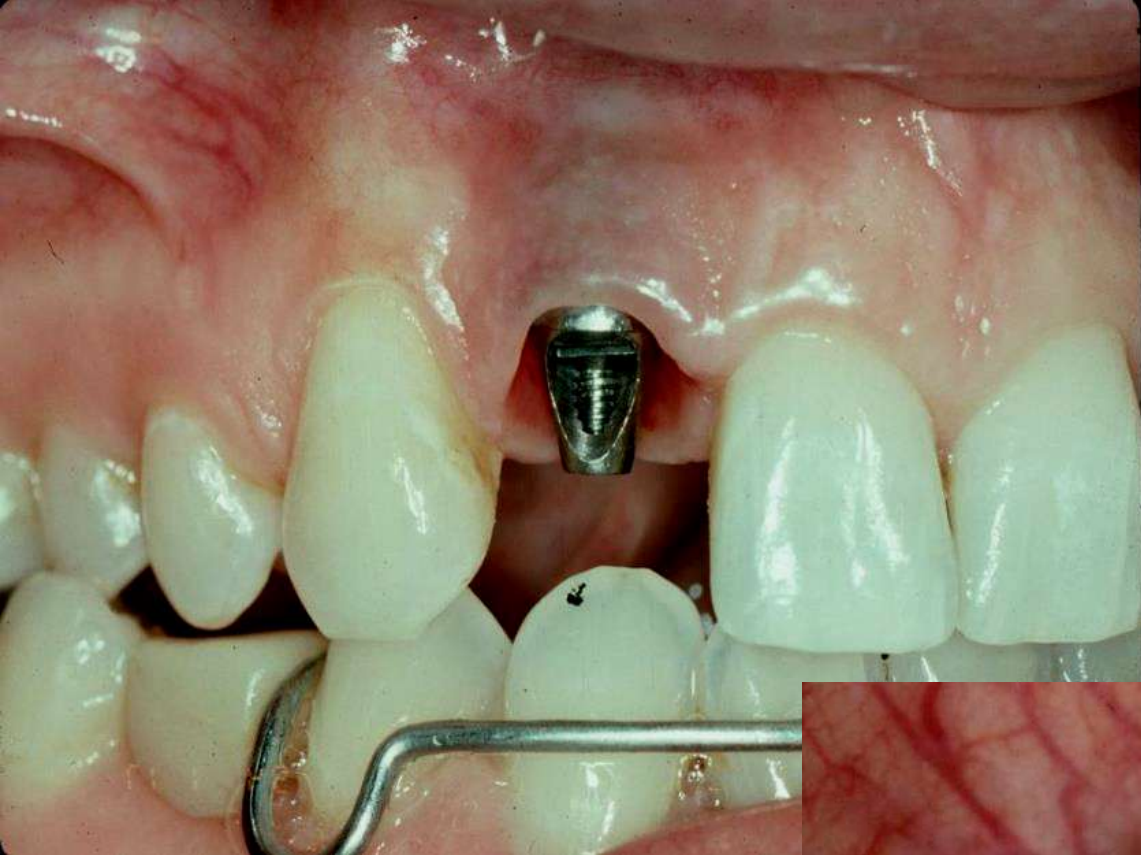




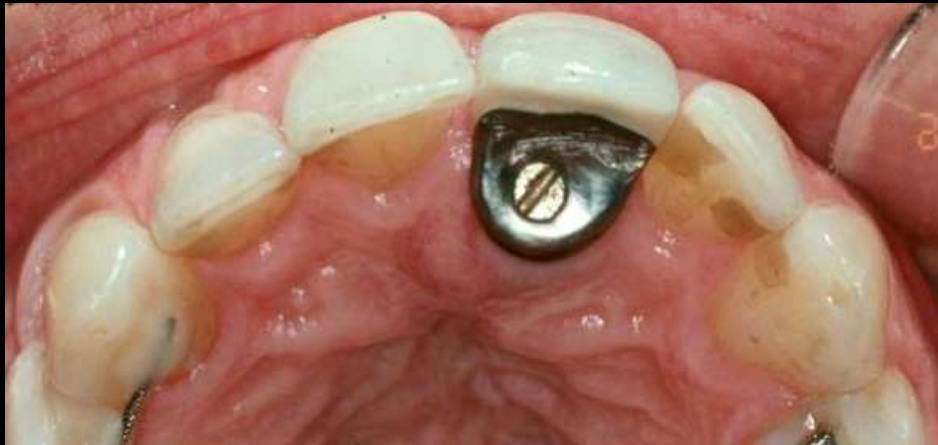
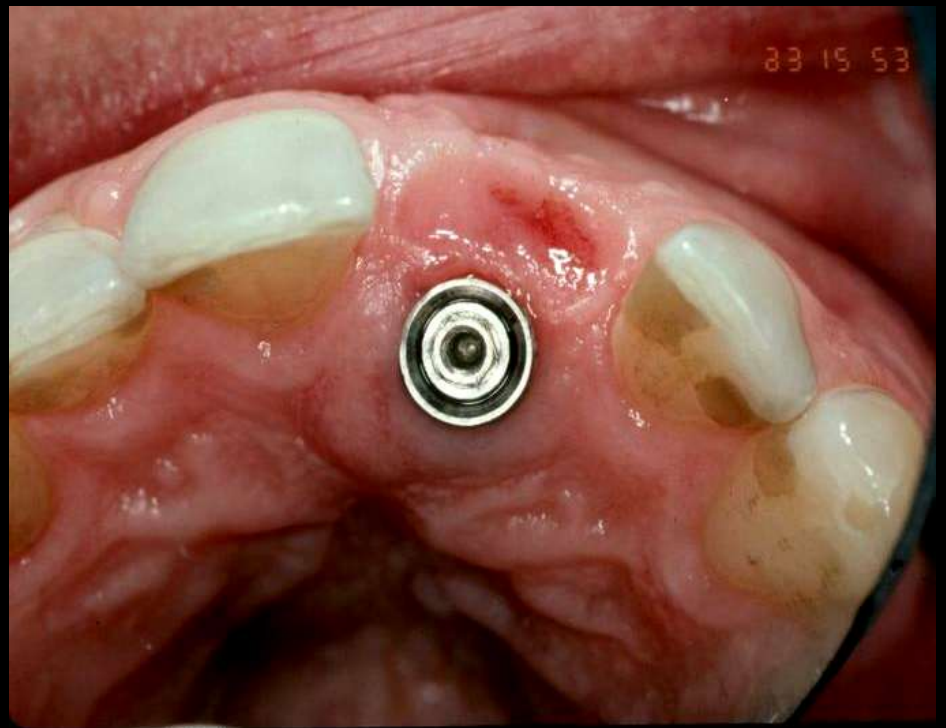
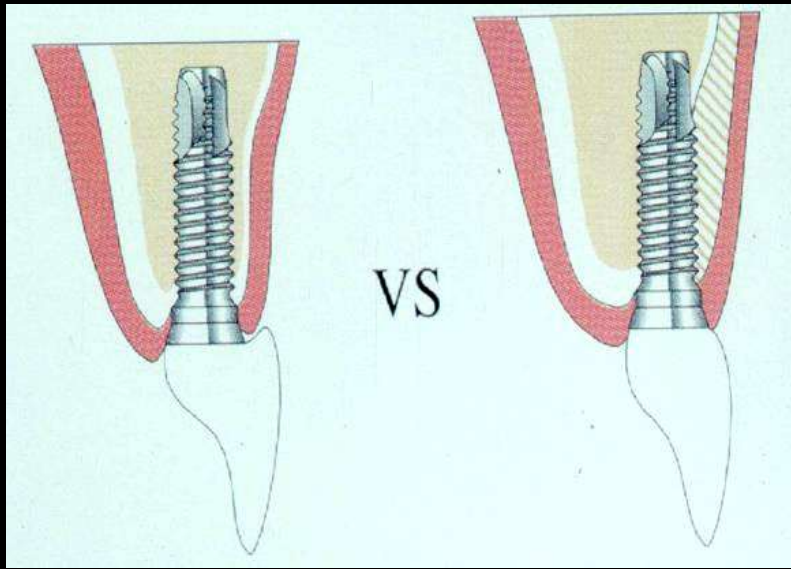
**NØDLØSNING - VINKLET
DISTANSE (PREFAB ELLER
CADCAM)**







**PALATINAL PLASSERING +/-
BEINOPPBYGNING**



Hvilket implantat er
best?

Identifiserte forskjeller: Hovedform



Rett-Rotform-Konisk-Ovoid-Trapesoid-Trinnvis...



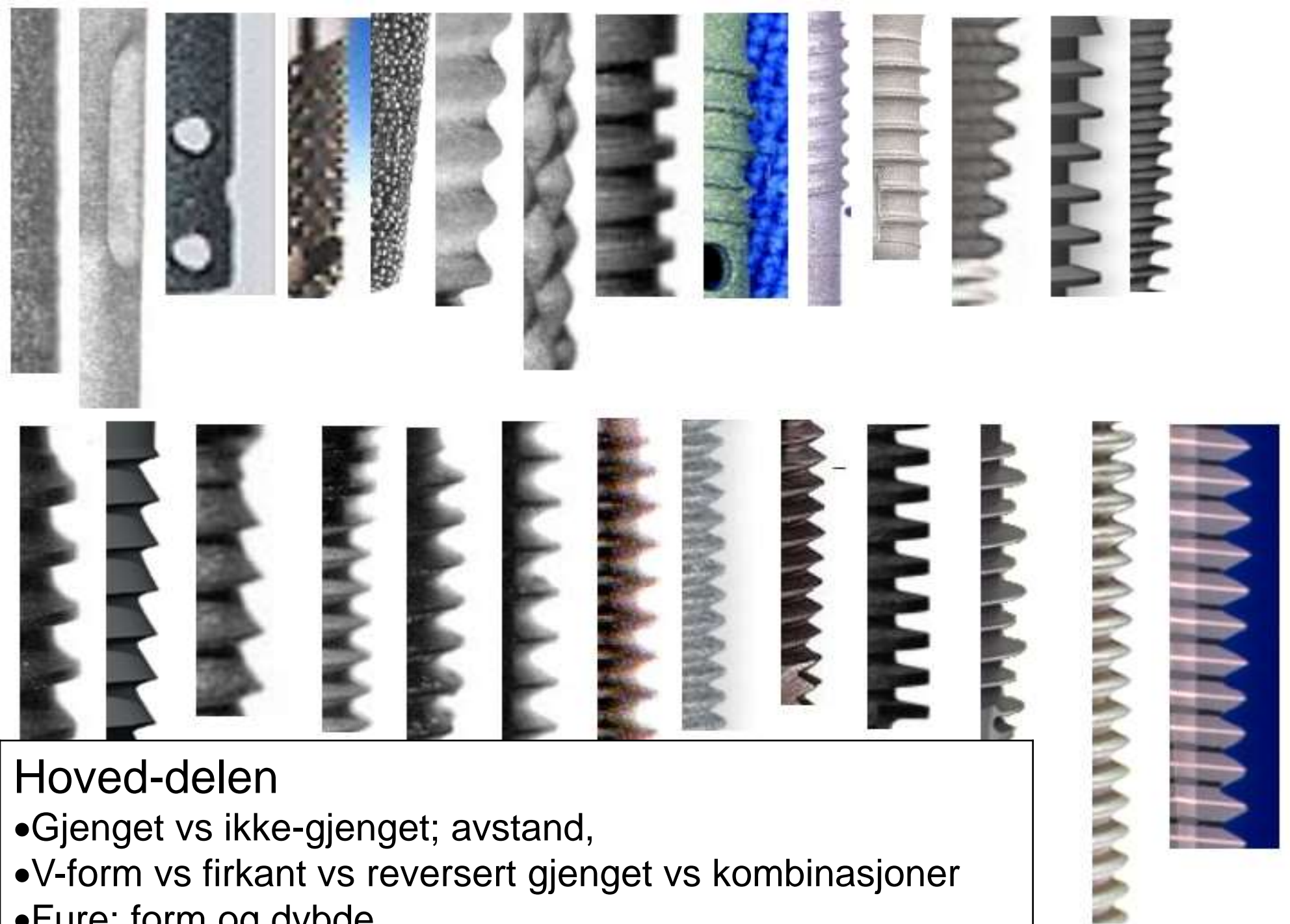
Forbindelses-delen:

- Ekstern vs Intern
- Hexagonal vs Octagonal vs kilet
- Morse-koning
- Rotasjon vs non-rotasjon
- Ekstra anti-rotasjon detaljer
- Høyde & bredde
- Kant-i-k vs bevel
- Slip-fit vs friksjon-fit
- Resiliens vs nonresiliens

Hals

- Krage vs non-krage
- Bredere vs rett vs konisk krage
- Kragehøyde
- Polert vs gjenger
- Ekstra detaljer på kragen
- Overflate-topografi





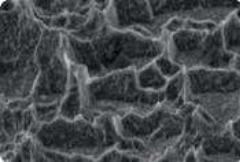
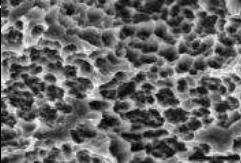


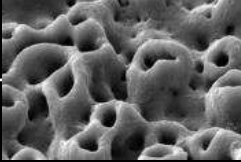
Hoved-delen

- Gjenget vs ikke-gjenget; avstand,
- V-form vs firkant vs reversert gjenget vs kombinasjoner
- Fure: form og dybde
- Mikroskopisk overflatetopografi



Apeks

- Gjenget vs ikke-gjenget
- V-form vs flat vs avrundet apeks
- Hull, runde, avlange, størrelser
- Apikal kammer / hulrom
- Furer # & størrelser
- Ekspanderende
- Mikroskopisk overflatetopografi

<u>Behandlings- prosess</u>	<u>Overflate-topografi</u>	<u>Eksempel</u>
Syreetsset Syreets+ Ca- deponering	Isotrop med høy forekomst av irregulariteter 	HCl/ H ₂ SO ₄ (Osseotite [®] , Biomet 3i) HCl/ H ₂ SO ₄ + nano-størrelse Kalsium- fosfat (Nanotite [®] , Biomet 3i)
Blastret	Isotrop 	TiO ₂ partikler (Tioblast [®] , Astra Tech AB)
Blastret + syreets	Isotrop  	1. Store Al ₂ O ₃ partikler + HCl & H ₂ SO ₄ (SLA [®] , Straumann) 2. Tricalcium fosfat + HFA + NO ₃ (MTX [®] , Zimmer) 3. TiO ₂ partikler + HFA (Osseospeed [®] , Astra Tech AB)
Hydroksiapatitt	Relativt ru isotrop	Sustain [®] (Keystone)
Oksidiert	Isotrop med forekomst av krater-strukturer 	TiUnite [®] (Nobel Biocare AB)
Titanium Plasma Spray (TPS)	Relativt ru isotrop	ITI [®] TPS (Straumann AG)
Maskinert	Skjæremarker produsert en orientert anisotrop	Brånemark System [®] MKIII (Nobel Biocare)

Forskjellig vertikal plassering ihht produsent

*Ekstern
forbindelse*

Intern forbindelse



Brånemark (Nobel Biocare)

Full Osseotite (Biomet 3i)

RBT ekstern

(Biohorizons)

Ankylos (Dentsply Friadent)

Replace Select (Nobel Biocare)

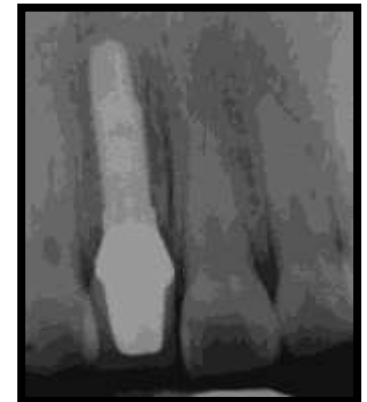
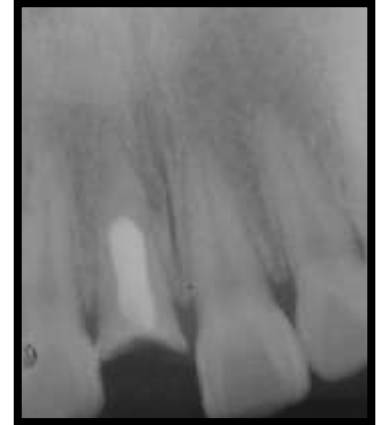
Osseospeed (AstraTech)

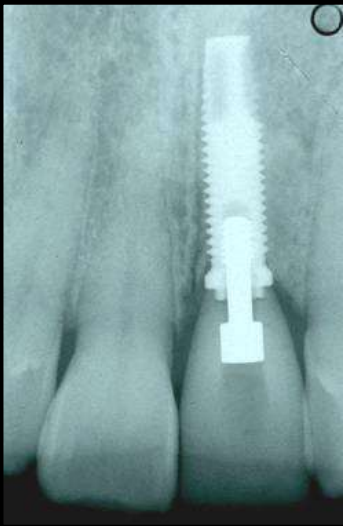
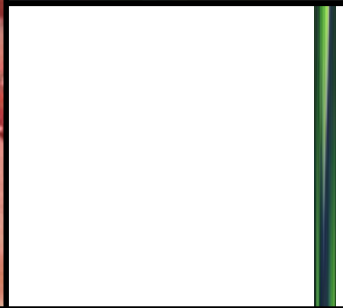
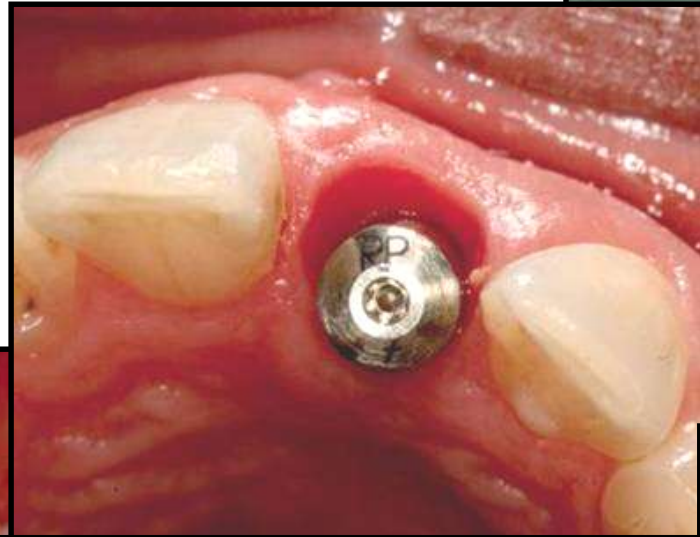
Bone Level (Straumann)

KASUS

1. TRAUMA & INTAKTE NABOTENNER

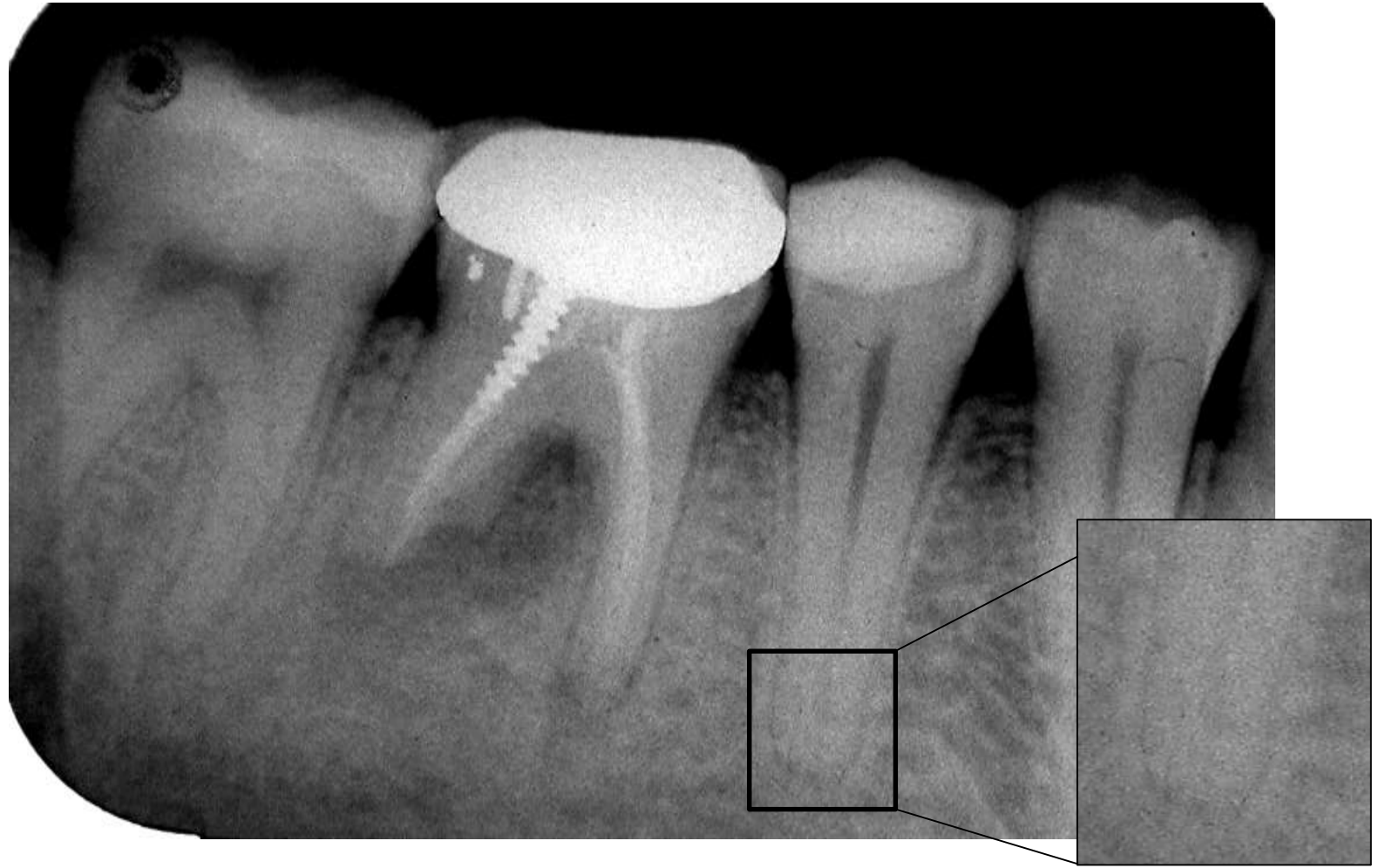
Vanligst – gammel traumeskade & intakte nabotenner





USIKKER ROTFYLLING –ENDOREVISJON ELLER EKSTRAKSJON & TANNIMPLANTAT

Pasientkasus #2 : Usikker rotfylling



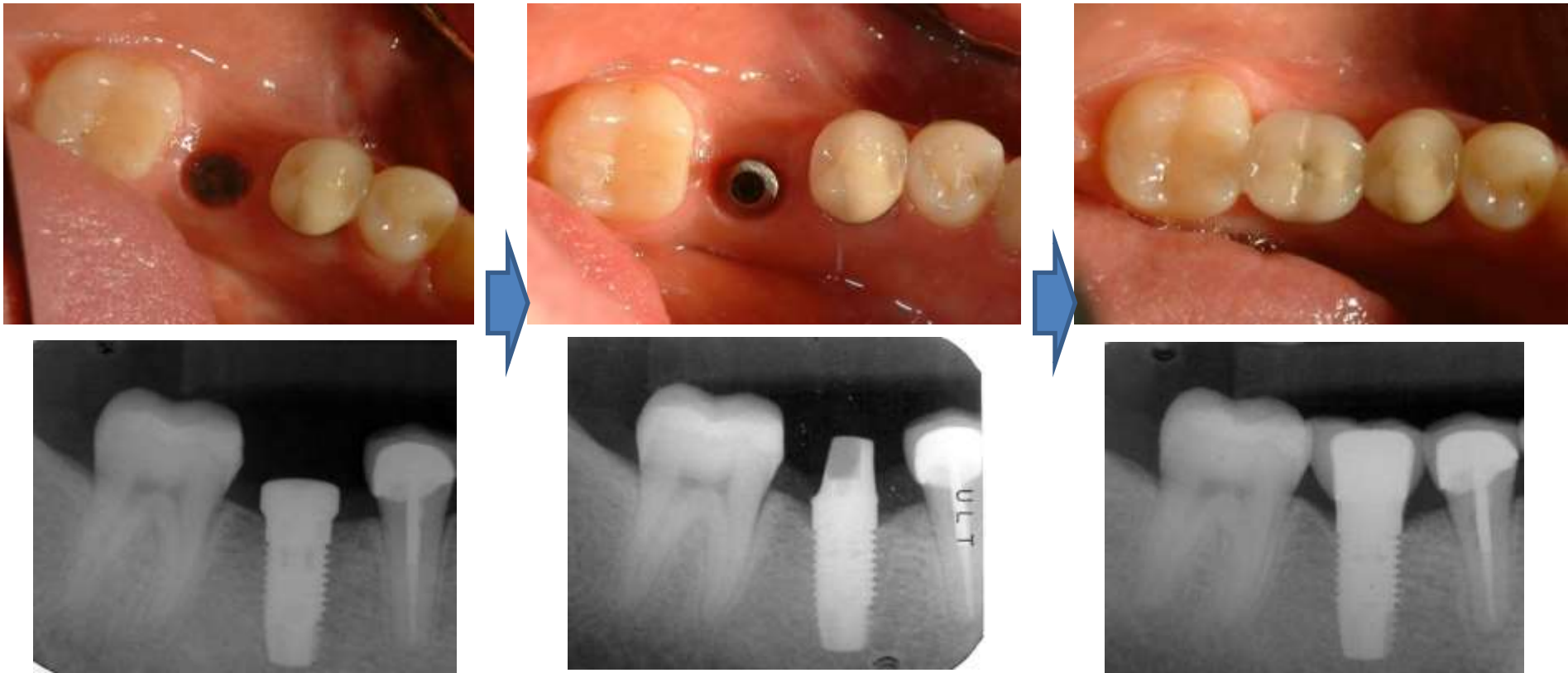
Lin, 2009

Pasientkasus #2 : Usikker rotfylling



Lin, 2009

Pasientkasus #2 : Usikker rotfylling



Lin, 2009



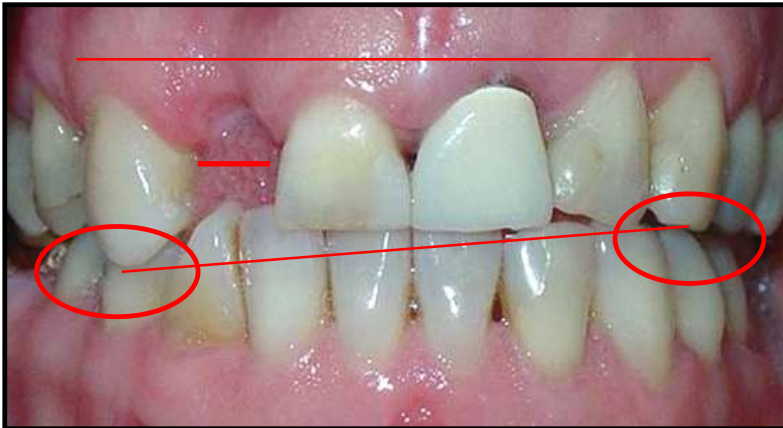
3. SINGELTANNSLUKA I FRONTEN – ER EN IMPLANTATLØSNING ALLTID BEST?

Kirurgi for singel-implantat kan noen ganger gi overraskelser!

Ønskelig kontra
realistisk mulig resultat



Pasientkasus #3: Krone på implantat eller bro?

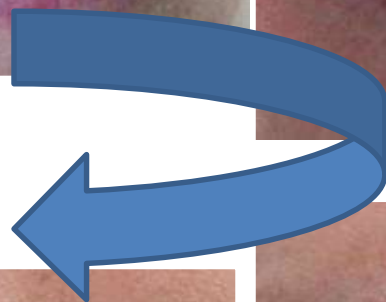


Behandlingsplan

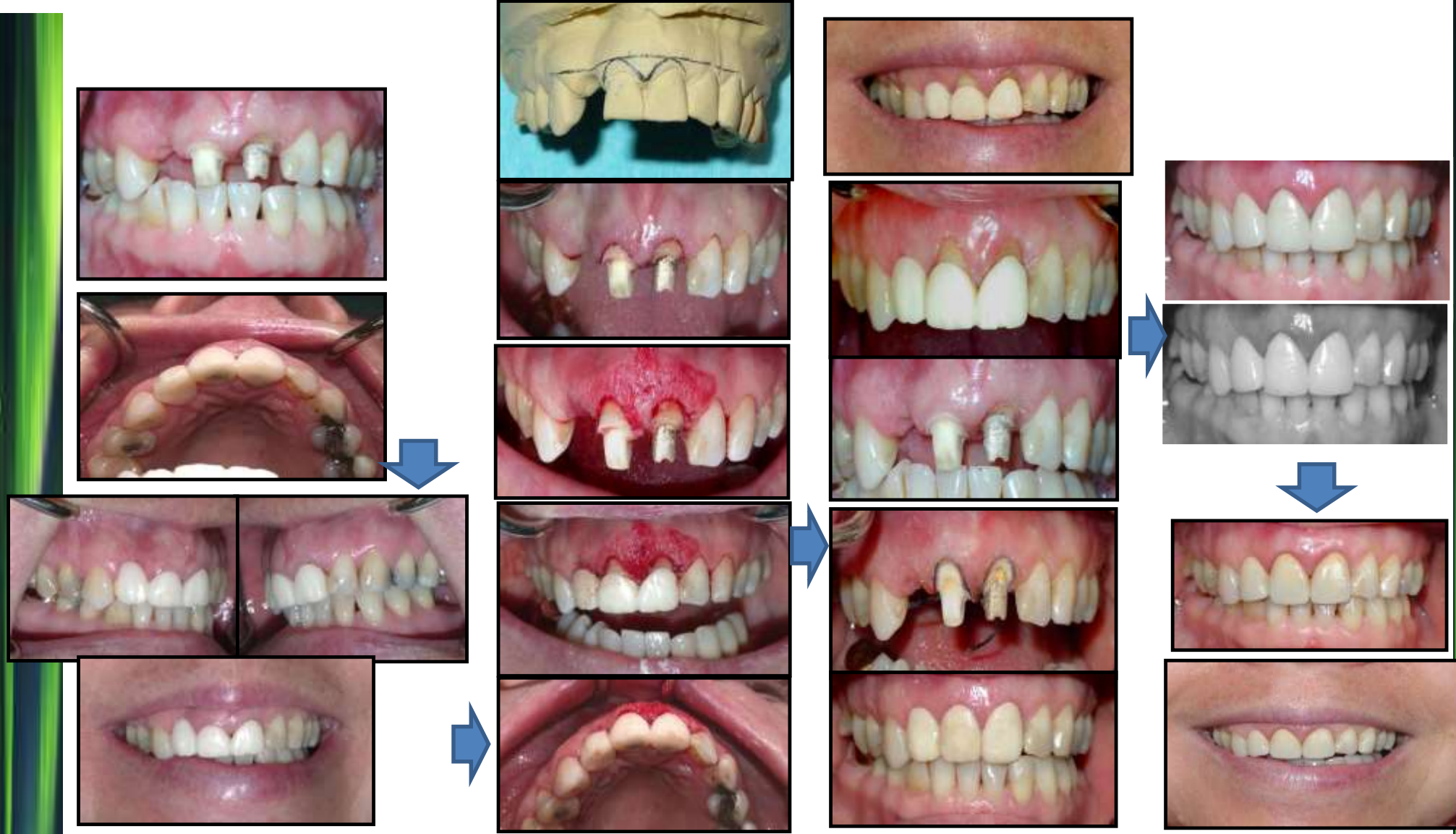
1. Endo 11 og 21 vurdering
2. Preliminær kronepreparering 11 & 21 med temporære kroner
3. Kroneforlengning 11-21 & bløtvevsplastikk 12
4. temporære kroner
5. 3-leddsbro x-11-21



Pasientkasus #3: Krone på implantat eller bro?



Pasientkasus #3: Krone på implantat eller bro?



Manglende tannanlegg, lateraler

Kjeveortopedi før singel-
implantat kan noen ganger gi
overraskelser!



Konvensjonell bro

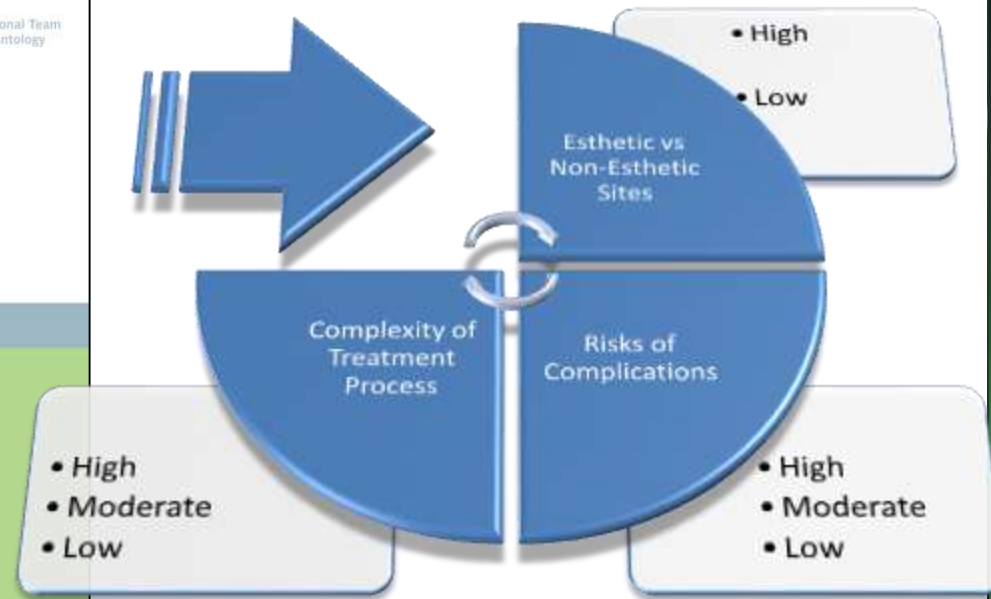
Tl. Arild Mo 2012

Planlegging, planlegging, planlegging

The screenshot shows the ITI logo (International Team for Implantology) in the top right corner. The main heading is "The SAC Assessment Tool" with a "click to continue" link below it. On the left, there is a legend: "S Straightforward", "A Advanced", and "C Complex". The background is a light green gradient.

<http://www.iti.org>

General Determinants





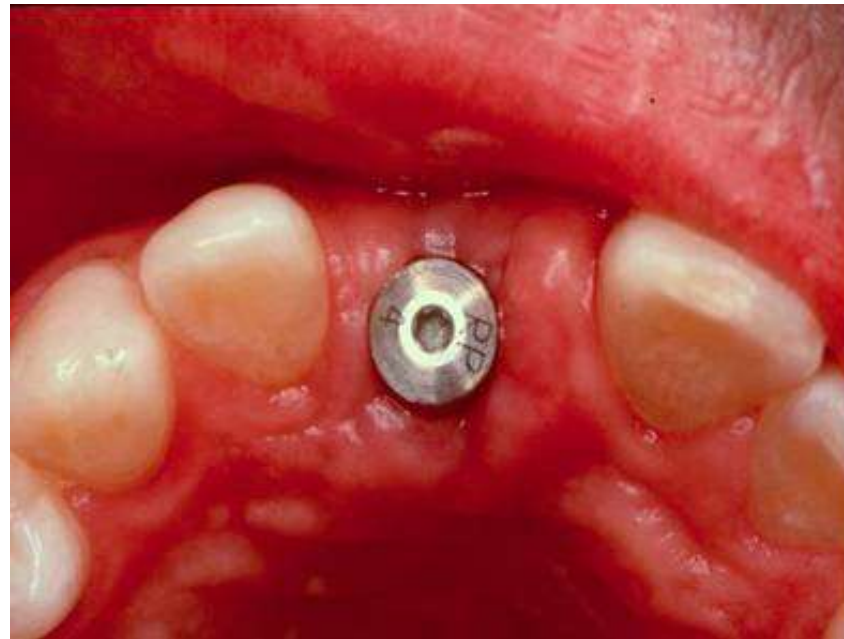
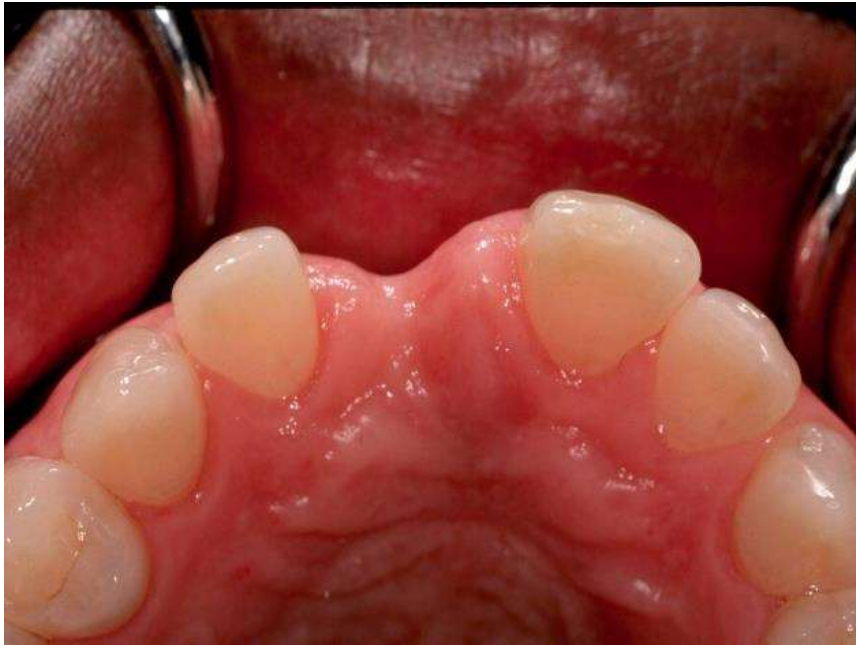
PERIOAKTIVE RØYKERE SOM ØNSKER IMPLANTATER POSTERIORT

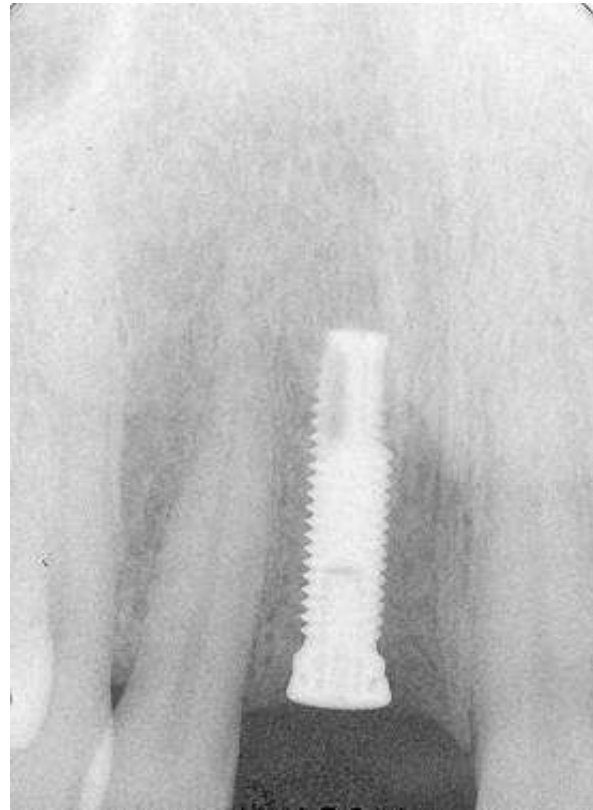
Pasientkasus #4: Implantat posteriort okj.



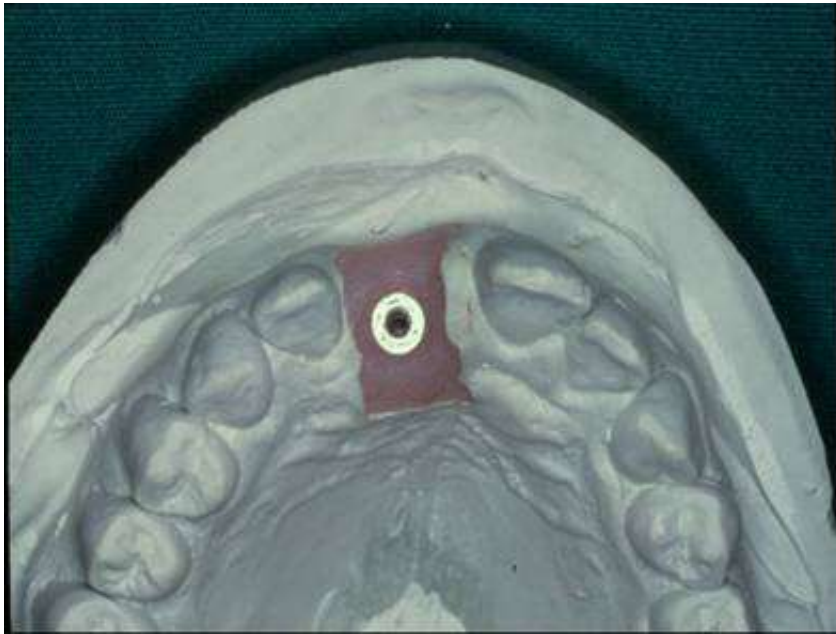


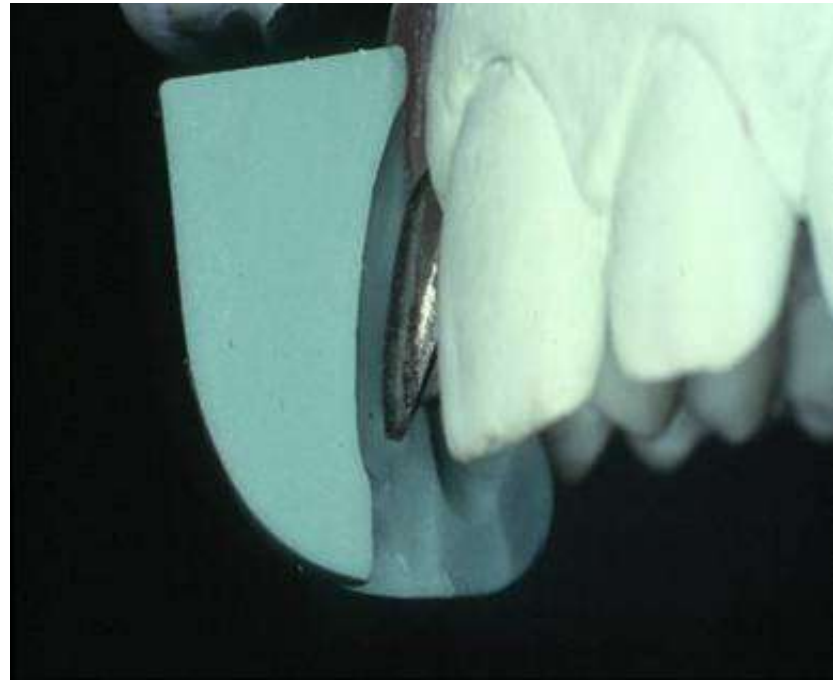


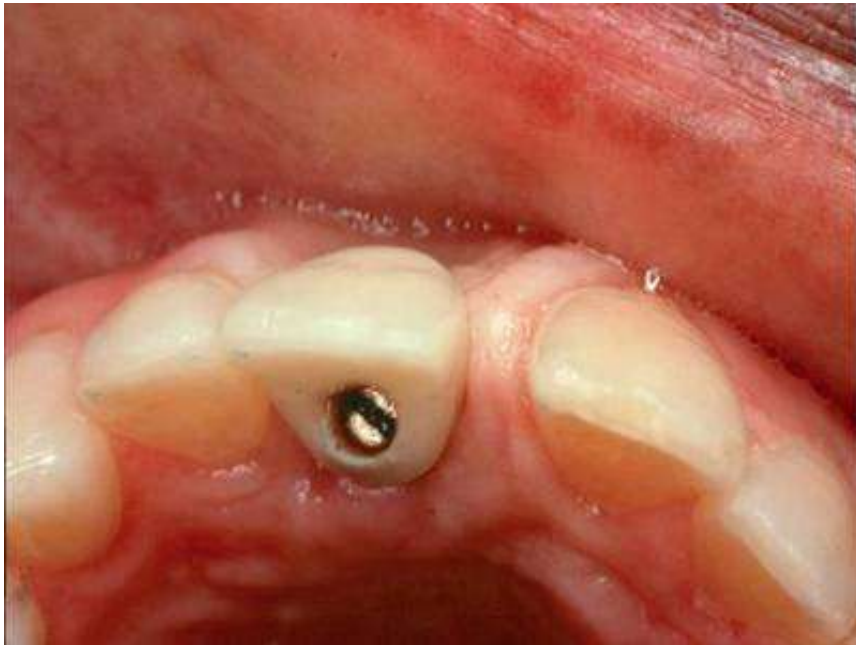














**KOSTNADENE FOR ENKELT-IMPLANTAT OG FOR EN
LITEN BRO LIKEVERDIGE SETT OVER TID?**

Vitenskapelig kunnskap og evidensnivå

1. Beikler T, Flemmig TF. EAO consensus conference: economic evaluation of implant-supported prostheses. Clin Oral Implants Res 2015; 26 Suppl 11: 57-63
2. Bassi F, Carr AB, Chang TL, et al. Economic outcomes in prosthodontics. Int J Prosthodont 2013; 26: 465-469
3. Vogel R, Smith-Palmer J, Valentine W. Evaluating the health economic implications and cost-effectiveness of dental implants: a literature review. Int J Oral Maxillofac Implants 2013; 28: 343-356
4. Scheuber S, Hicklin S, Brägger U. Implants versus short-span fixed bridges: survival, complications, patients' benefits. A systematic review on economic aspects. Clin Oral Implants Res 2012;23 Suppl 6:50-62.

